

INTRO

IT Istruzioni ed avvertenze per l'installazione e l'uso

EN Installation and use instructions and warnings

FR Instructions et avertissements pour l'installation et l'utilisation

ES Instrucciones y advertencias para la instalación y el uso

DE Installierungs-und Gebrauchsanleitungen und Hinweise



Contents

1. General safety precautions	1
2. Description of the product	1
3. Installation	1
4. Limit switch positioning	4
5. Electrical connections	4
6. Testing and commissioning	4
7. Product maintenance	5
8. Disposal of the product	5
9. Accessories on request	6
10. Gearmotor manual release	6
11. Technical features	6
CE Declaration of Conformity	1

1. General safety precautions

1.1 - Recommendations regarding safety

• **ATTENTION!** – This manual contains important instructions and recommendations regarding the safety of persons. Incorrect installation can cause serious injury. Read the manual completely before starting work. If in doubt, suspend the installation and request clarifications from the King After-sales Assistance.

• **ATTENTION!** – Important instructions: keep this manual for any future maintenance interventions and product disposal.

• **ATTENTION!** – In compliance with the most recent European Legislation, the realisation of an automatic door or gate must respect the Standards envisioned by the 2006/42/CE Directive (ex 98/37/CE) (Machinery Directive) and in particular, the EN 12445; EN 12453; EN 12635 and EN 13241-1 Standards, which allow to declare conformity of the automation. Considering this, all product installation, connection, inspection and maintenance operations must only be performed by a qualified and skilled technician!

1.2 - Recommendations for installation

• Before starting installation, check whether this product is suitable to automate your gate or door (see chapter 3 and the “Product technical features”). If it is not suitable, DO NOT proceed with installation.

• **All installation and maintenance operations must take place with the automation disconnected from the electric power input.** If the power input disconnection device is not visible from the place where the automation is positioned, before starting work, affix a sign onto the disconnection device that states “ATTENTION! MAINTENANCE IN PROGRESS”.

• Handle the automation with care during installation, preventing crush-

ing, blows, falls or contact with liquids of any nature. Do not place the product near to heat sources or expose it to naked flames. All of these actions can damage it and be cause of malfunctioning or dangerous situations. If this occurs, suspend installation immediately and contact the King After-sales Assistance.

• Do not modify any product parts. Unauthorised operations can only cause malfunctioning. The manufacturer declines liability for damage deriving from arbitrary modifications to the product.

• If the gate or door to be automated has a pedestrian door the plant must be set up with a control system that prevents functioning of the motor when the pedestrian door is open.

• The product packaging material must be disposed of in compliance with local legislation.

2. Description of the product

This product is destined to be used to automate gates or doors with hinged panels.

ATTENTION! – Any use different to that described and in environmental conditions different to those stated in this manual must be considered improper and prohibited!

The product is an electro-mechanical gear motor, with a 24 Vdc motor. The gear motor is powered by the external control unit, to which it must be connected.

If the electric energy is interrupted (black-out), the gate panels can be moved by releasing the gear motor using the relevant wrench; to perform the manual manoeuvre, see chapter 8.

Do not use gear motors with incompatible control units.

3. Installation

3.1 - Preliminary checks on installation

Before performing installation, check the integrity of the product components, the adequacy of the model chosen and the suitability of the environment destined for installation.

IMPORTANT – The gear motor cannot automate a manual gate that does not have an efficient and safe mechanical structure. Moreover, it cannot solve defects caused by incorrect installation or bad maintenance of the gate itself.

3.2 - Suitability of the gate to automate and the surrounding environment

• Check that the gate mechanical structure is suitable to be automated and complies with the Standards in force on the territory (if necessary, refer to the data given on the gate label).

• Moving the gate panel manually in Opening and in Closure, check that the movement takes place with the same and constant friction in all points of the run (there must not be moments of greater effort).

• Check that the gate panel stays in equilibrium, i.e. that it does not move if taken manually into any position and left.

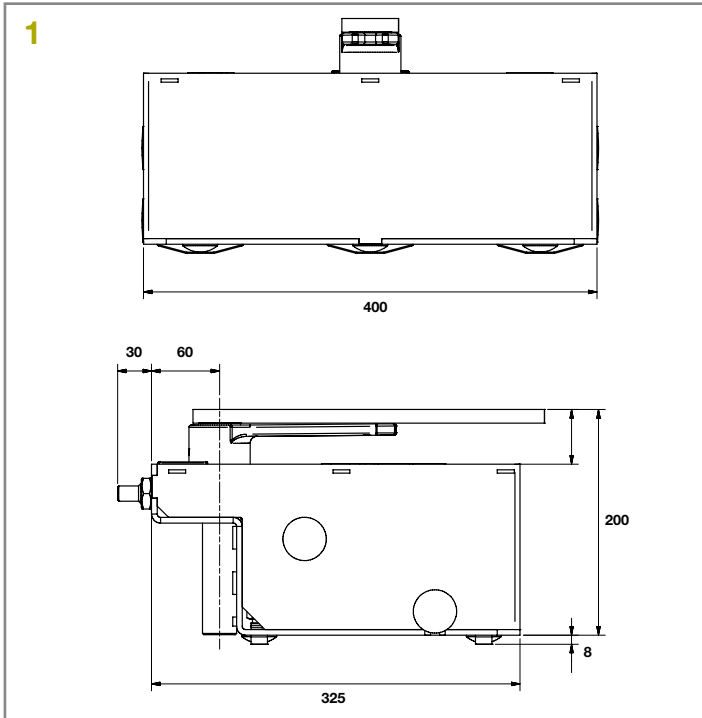
• Check that the space around the gear motor allows to manually release the gate panels easily and safely.

• Envision end run retainers on the ground both for opening and closure of the gate.

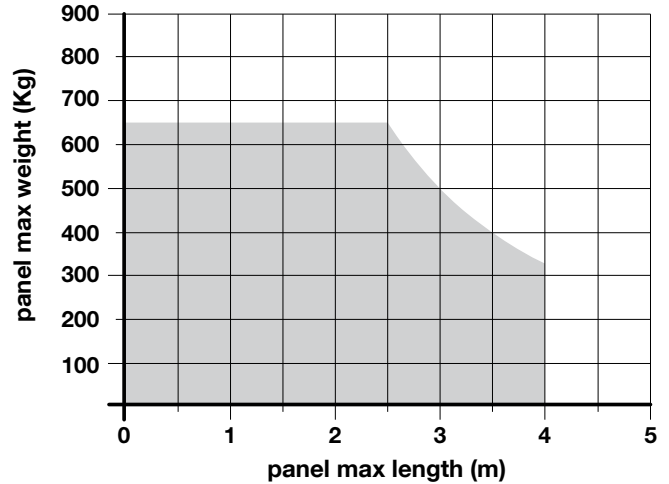
• Check that the gear motor fixing area is compatible with the clearance of the latter (fig. 1).

3.3 - Limits of use for the product

Before installing the product, check that the gate panel has dimensions and weight that lie within the limits given in graph 1; also evaluate the climatic conditions (e.g. strong wind) present in the place of installation: they can greatly reduce the values given in the graph.



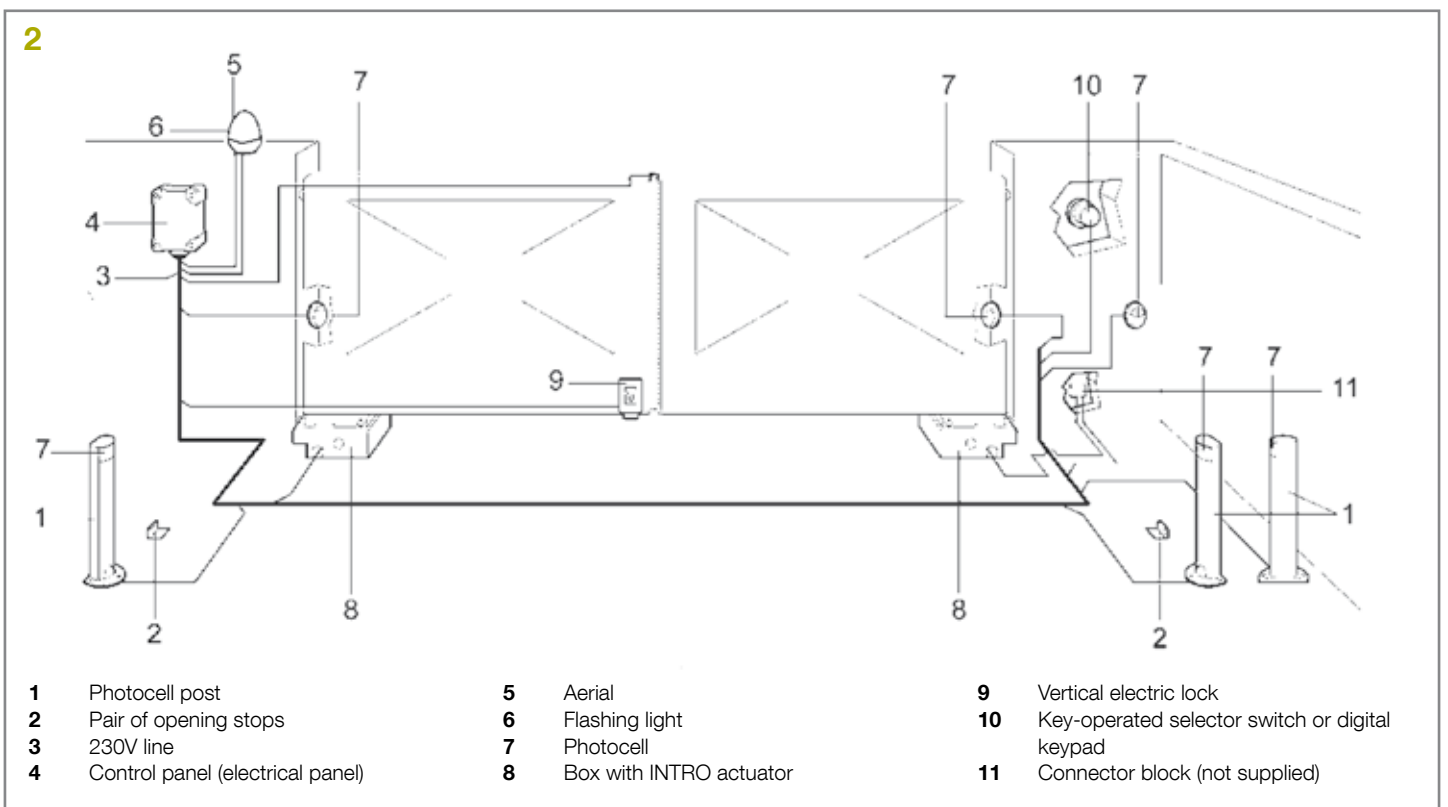
Graph 1



3.4 - Set-up for installation

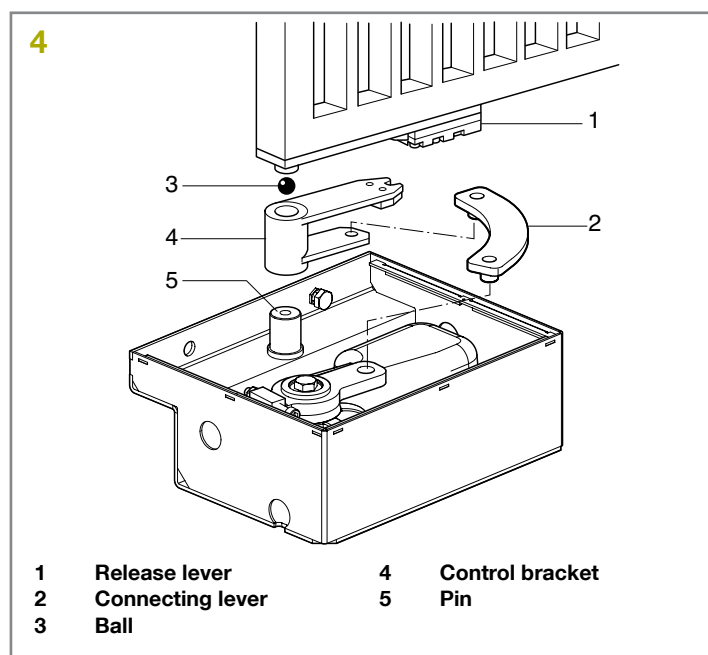
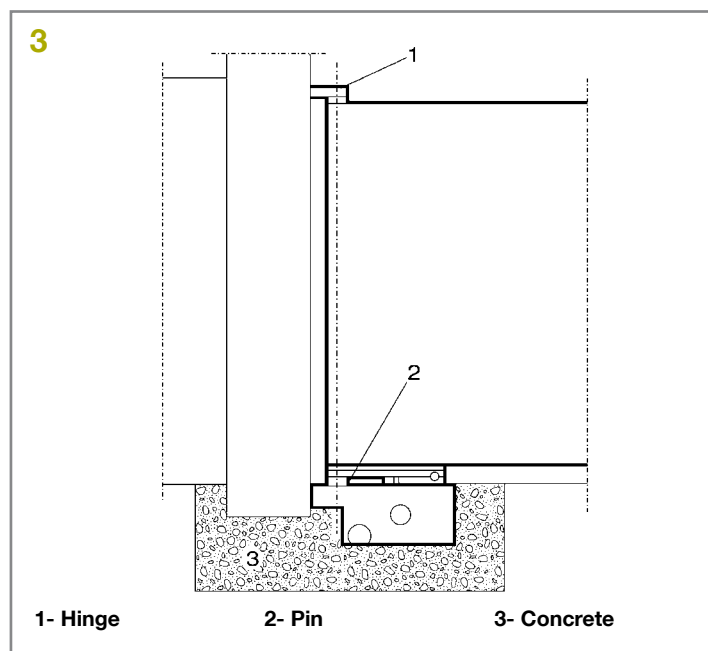
Fig. 2 shows an example of automated plant realised with King gates components. These components are positioned according to the typical and usual layout.

With reference to fig. 2, establish the approximate position where each component envisioned in the plant will be installed and the most appropriate connection layout.



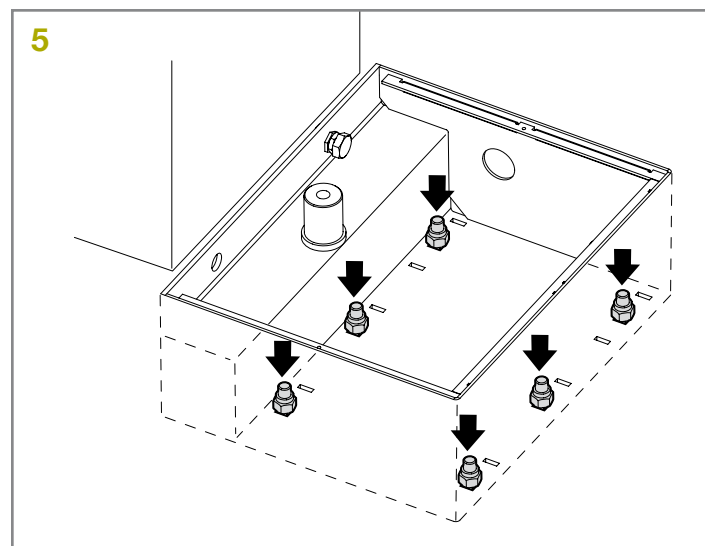
3.5 - Mounting: Overall Dimensions and Positioning of Foundation Box

01. Dig a generously sized foundation pit to house the foundation box (fig. 3); prepare a drain pipeline for draining off water and avoid the build-up of water.
02. If the gate is equipped with its own mechanical stops (fig. 2) skip directly to point 3. Otherwise secure the opening limiter accessory to the box (see paragraph 4).
03. Place the box inside the foundation hole; the stud must be aligned with the axis of the hinge (fig. 3).
04. Provide a duct for the electrical cables and a drainage pipe.
05. Bury the foundation box in concrete, making sure it is set level.
06. Mount the control bracket on the box's stud along with the ball (fig. 4).
07. Set the gate leaf on the release lever and weld them securely.
08. Grease using a suitable grease nozzle.



3.6 - Installation of INTRO Gearmotor

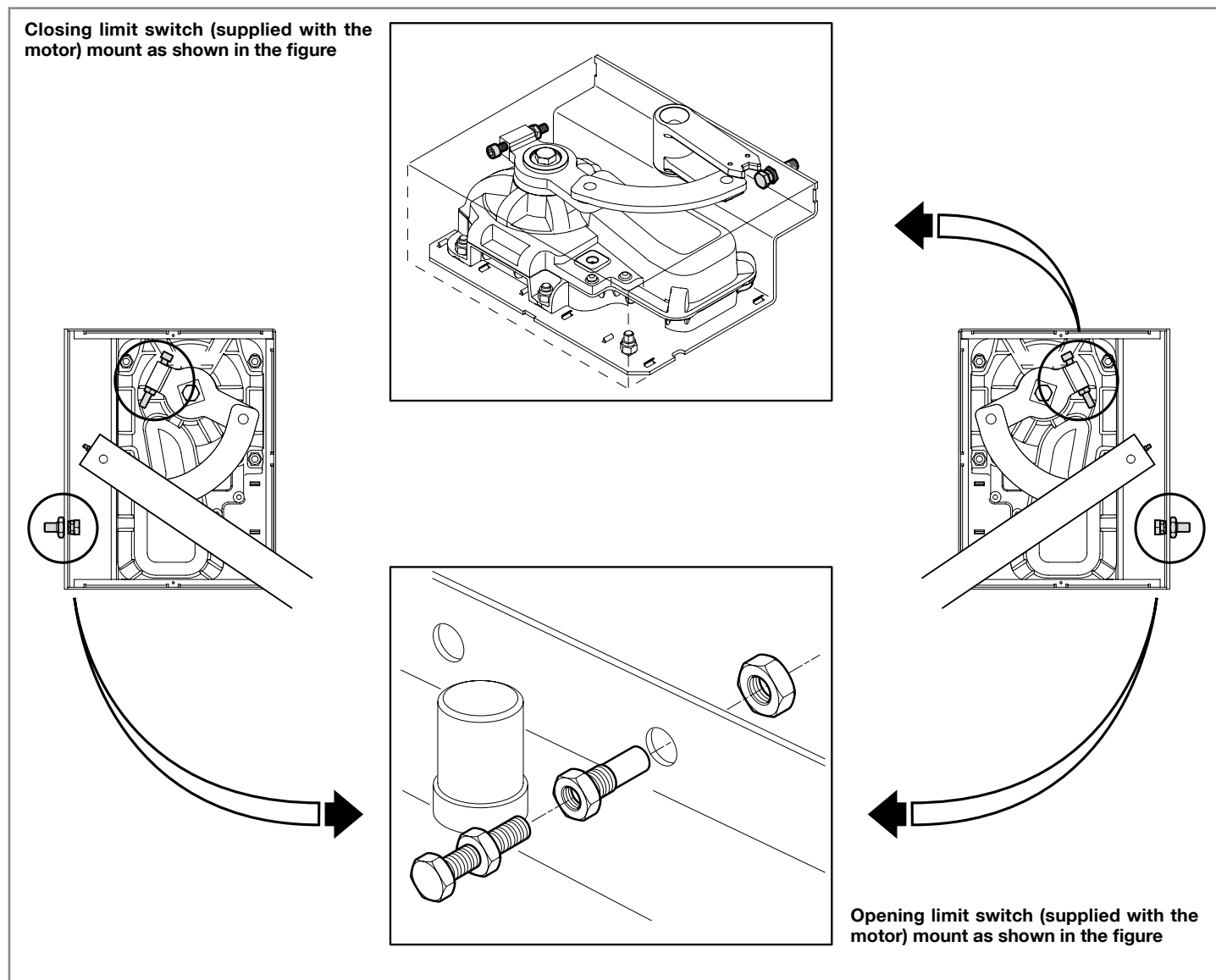
01. Remove the nuts and washers shown in the figure on the right (fig. 5).
02. Place the gearmotor inside the foundation box making sure it faces the correct direction.
03. Secure the gearmotor with the previously removed washers and nuts.
04. Connect the gearmotor to the gate by means of the connecting lever (2) (fig. 4).



ZE

4. Limit switch positioning

EN



5. Electric connections

Recommendations:

- The gear motor is supplied with an electric power input cable measuring 2 m. Therefore, if a greater distance must be covered to perform the electric connections, a diversion box must be used (not supplied). **IMPORTANT! – It is prohibited to join the electric cable inside the foundation case.**
- **Make the electric connections with the mains power input disconnected.**

To connect the power input cable to the control unit, see the manual regarding the latter and the following indications:

- For model **INTRO24-400** connect the cables as follows:

Blu = 24 V motor power input

Brown = 24 V motor power input

Yellow/Green = ⊕

- For model **INTRO230-400** connect the cables as follows:

Black = “open” phase

Brown = “close” phase

Grey = Common

Yellow/Green = ⊕

6. Testing and commissioning

Testing of the entire system must be conducted by experienced and qualified personnel, who must establish what tests are necessary depending on the risks involved.

To test INTRO proceed as follows:

- close the gate;

- disconnect the power supply to the control unit;
- release the gearmotor from the gate leaf as shown in paragraph “Manual release device (Key and Lever-Operated Release)” in Chapter “Instructions and Warnings for Users of the INTRO Gearmotor”;
- open the gate manually all the way;
- make sure the gate opens and closes smoothly without any points of friction;
- make sure that the gate, when stopped in any position and released, does not display a tendency to start moving again;
- make sure that the safety systems and mechanical stops are in good working order;
- make sure that the screw connections are properly tightened;
- clean the inside of the box and make sure that the drain operates properly;
- when all the checks have been completed, re-connect the gearmotor and power the control unit;
- INTRO is not equipped with any torque adjustment device, therefore this operation is performed by the control unit;
- measure the impact force as provided by the EN12453 and EN12445 standards.

7. Product maintenance

INTRO does not require any special maintenance; however, routine checks conducted every six months at least will ensure the long life of the gearmotor as well as the correct and safe operation of the system.

Maintenance consists simply in repeating the testing procedure.

8. Disposal of the product

This product is an integral part of the automation system, and should therefore be disposed of together with it.

As for the installation operations, even at the end of this product's life span, the dismantling operations must be carried out by qualified experts.

This product is made up of various types of materials: some can be recycled while others need to be disposed of. Find out about the recycling or disposal systems envisaged by your local regulations for this product category.

Attention! – Parts of the product could contain pollutants or hazardous substances which, if released into the environment, could cause harmful effects to the environment itself as well as to human health.

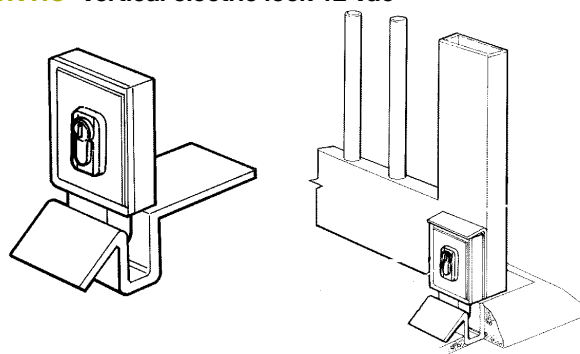


As indicated by the symbol opposite, throwing away this product as domestic waste is strictly forbidden. So dispose of it as differentiated waste, in accordance with your local regulations, or return the product to the retailer when you purchase a new equivalent product.

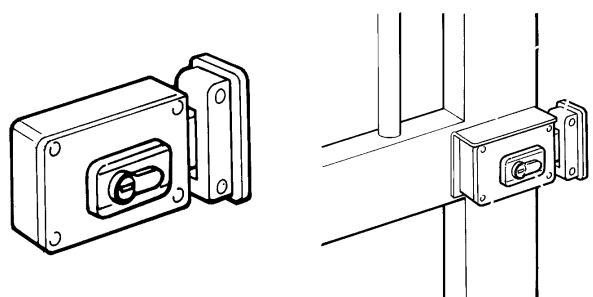
Important! – the local applicable regulations may envisage heavy sanctions in the event of illegal disposal of this product.

9. Accessories on request

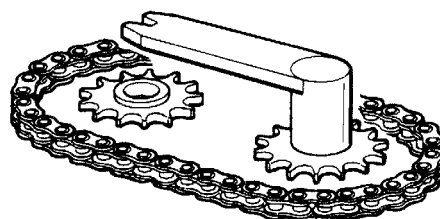
LOCK HO Vertical electric lock 12 Vac



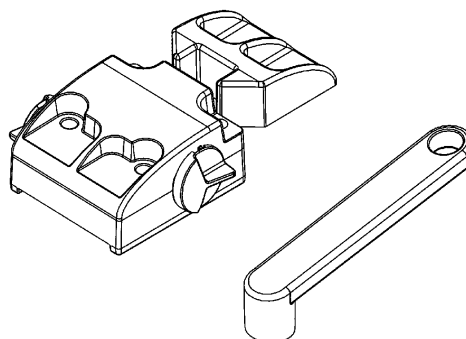
LOCK VE Horizontal electric lock 12 Vac



INT 360 360° opening device



INTROLOCK Key-operated release mechanism

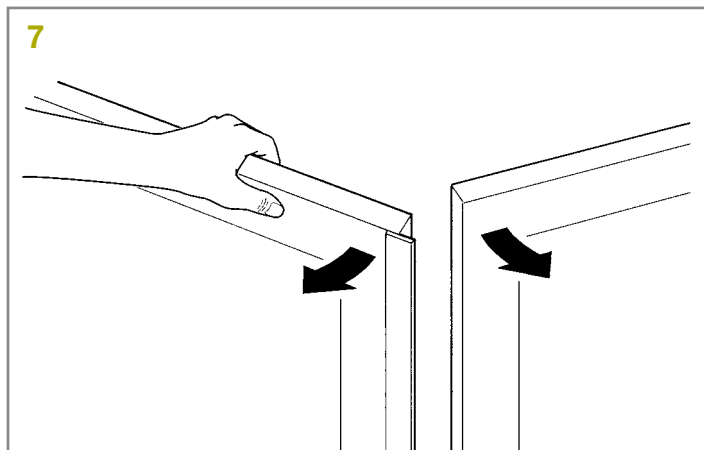
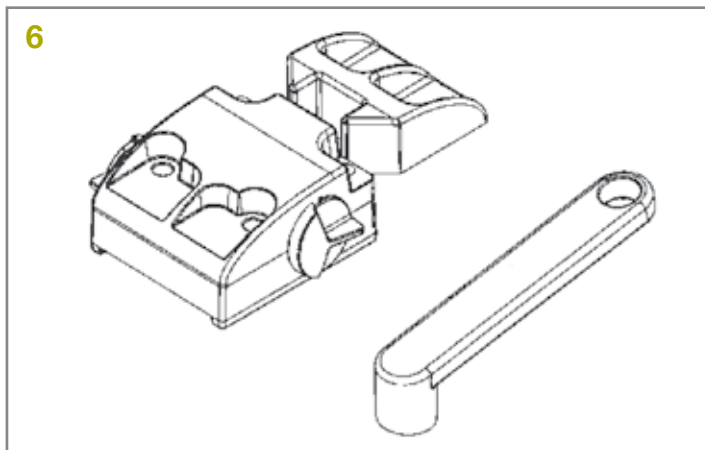


10. Gearmotor manual release

Type Lever-Operated Release INTROLOCK (fig. 6)

- 01. Pull down the lock cover.
- 02. Insert the key and rotate it 90° clockwise.
- 03. Move the gate manually (fig. 7).

⚠ The system will revert to automatic operation upon the first electrical manoeuvre.



11. Technical features

RECOMMENDATIONS: • All technical features stated make reference at a room temperature of 20°C (± 5°C). • King S.p.a. reserves the right to modify the product at any time it deems necessary, however maintaining the same functionality and destination of use.

	INTRO24-400	INTRO230-400
Type	Electro-mechanical gear motors for gates and doors with hinged panels	
Power input	24 V \equiv	230 V \sim
Peak absorption	5 A	1,5 A
Maximum absorption	1,5 A	1 A
Peak Power	120 W	340 W
Maximum power	36 W	180 W
Capacitor incorporated	-	7 μ F
Protection rating	IP 67	
Run	from 0° to 110° or 360°	
Idle speed	1 rpm (1,25 rpm*)	0,85 rpm
Speed at nominal torque	0,85 rpm	0,65 rpm
Maximum torque	300 Nm	500 Nm
Nominal torque	75 Nm	125 Nm
Functioning temperature	from -20°C to +50°C	
Cycles/hour at the nominal torque	60	20
Dimensions	375 mm x 225 mm x h 110 mm	
Weight	12,5 kg	14,3 kg

* Value refers to a power supply voltage of 30V.

IT - Dichiarazione CE di conformità

Dichiarazione in accordo alle Direttive:2004/108/CE (EMC); 2006/42/CE (MD) allegato II, parte B

Numero dichiarazione: K108/INTRO **Rev.:** 0 **Lingua:** IT
Nome produttore: KING GATES S.R.L. • **Indirizzo:** Via Malignani, 42 - 33077 - Sacile (PN) Italy • **Tipo:** Motoriduttore elettromeccanico Intro • **Modello:** INTRO230-400, INTRO24-400

Il sottoscritto Alex Antonioli in qualità di Amministratore Delegato, dichiara sotto la propria responsabilità che il prodotto sopra indicato risulta conforme alle disposizioni imposte dalle seguenti direttive:

•DIRETTIVA 2004/108/CE DEL PARLAMENTO EUROPEO E DEL CONSIGLIO del 15 dicembre 2004 concernente il ravvicinamento delle legislazioni degli Stati membri relative alla compatibilità elettromagnetica e che abroga la direttiva 89/336/CEE, secondo le seguenti norme armonizzate: EN 61000-6-2:2005, EN 61000-6-3:2007

Inoltre il prodotto risulta essere conforme alla seguente direttiva secondo i requisiti previsti per le "quasi macchine":

•Direttiva 2006/42/CE DEL PARLAMENTO EUROPEO E DEL CONSIGLIO del 17 maggio 2006 relativa alle macchine e che modifica la direttiva 95/16/CE (rifusione)

- Si dichiara che la documentazione tecnica pertinente è stata compilata in conformità all'allegato VII B della direttiva 2006/42/CE e che sono stati rispettati i seguenti requisiti essenziali:

1.1- 1.1.2- 1.1.3- 1.2.1-1.2.6- 1.5.1-1.5.2- 1.5.5- 1.5.6- 1.5.7- 1.5.8- 1.5.10- 1.5.11

- Il produttore si impegna a trasmettere alle autorità nazionali, in risposta

ad una motivata richiesta, le informazioni pertinenti sulla "quasi macchina", mantenendo impregiudicati i propri diritti di proprietà intellettuale.

- Qualora la "quasi macchina" sia messa in servizio in un paese europeo con lingua ufficiale diversa da quella usata nella presente dichiarazione, l'importatore ha l'obbligo di associare alla presente dichiarazione la relativa traduzione.

- Si avverte che la "quasi macchina" non dovrà essere messa in servizio finché la macchina finale in cui sarà incorporata non sarà a sua volta dichiarata conforme, se del caso, alle disposizioni della direttiva 2006/42/CE.

Inoltre il prodotto risulta conforme alle seguenti norme:


EN 60335-1:2002 + A1:2004 + A11:2004 + A12:2006 + A2:2006 + A13:2008+ A14:2010 + A15:2011; EN 60335-2-103:2003 +A1:2009

Il prodotto risulta conforme, limitatamente alle parti applicabili, alle seguenti norme:

EN 13241-1:2003, EN 12445:2002, EN 12453:2002, EN 12978:2003

Sacile, 19 06 2012

Alex Antonioli (Amministratore Delegato)


EN - CE Declaration of Conformity

Declaration complying with the following directives: 2004/108/EC (EMC); 2006/42/EC (MD) Annex II, Part B

Declaration number: K108/INTRO **Rev.:** 0 **Language:** EN
Manufacturer's name: KING GATES S.R.L. • **Address:** Via Malignani, 42 - 33077 - Sacile (PN) Italy • **Type:** Intro electromechanical gearmotor • **Model:** INTRO230-400, INTRO24-400

I, the undersigned Alex Antonioli, as Managing Director, hereby declare under my own responsibility that the products identified above comply with the provisions of the following Directives:

•DIRECTIVE 2004/108/EC OF THE EUROPEAN PARLIAMENT AND OF THE COUNCIL of 15 December 2004 on the approximation of the laws of the Member States relating to electromagnetic compatibility and repealing Directive 89/336/EEC, in accordance with following harmonised standards. EN 61000-6-2:2005, EN 61000-6-3:2007

In addition, the product conforms to the following Directive on partly completed machinery:

Directive 2006/42/EC OF THE EUROPEAN PARLIAMENT AND COUNCIL of May 17 2006 regarding machines, and amending Directive 95/16/EC (consolidated text)

- It is hereby declared that the relevant technical documentation has been compiled in accordance with Annex VII Part B of Directive 2006/42/EC and that the following essential requirements have been applied and fulfilled:

1.1- 1.1.2- 1.1.3- 1.2.1-1.2.6- 1.5.1-1.5.2- 1.5.5- 1.5.6- 1.5.7- 1.5.8- 1.5.10- 1.5.11

- The manufacturer undertakes to transmit, in response to a reasoned request by the national authorities, relevant information on the partly completed machinery. This shall be without prejudice to the intellectual property rights of the manufacturer of the partly completed machinery.

- Should the partly completed machinery be put into service in a European country with an official language different to the one used in this declaration, a translation into that language must be provided by the person bringing the machinery into the language area in question.

- The partly completed machinery must not be put into service until the final machinery into which it is to be incorporated has been declared in conformity with the provisions of Directive 2006/42/EC, where appropriate.

The product also complies with the following standards:

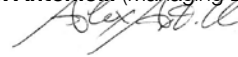
EN 60335-1:2002 + A1:2004 + A11:2004 + A12:2006 + A2:2006 + A13:2008+ A14:2010 + A15:2011; EN 60335-2-103:2003 +A1:2009

The product complies with the following standards (limited to the applicable sections):

EN 13241-1:2003, EN 12445:2002, EN 12453:2002, EN 12978:2003

Sacile, June 19 2012

Alex Antonioli (Managing Director)


FR - Déclaration de conformité CE

Déclaration conforme aux directives :2004/108/CE (EMC); 2006/42/CE (MD) annexe II, partie B

Numéro de déclaration : K108/INTRO **Rév.:** 0 **Langue :** FR
Nom du producteur : KING GATES S.R.L. • **Adresse :** Via Malignani, 42 - 33077 - Sacile (PN) Italie • **Type :** Réducteur électromécanique Intro • **Modèle :** INTRO230-400, INTRO24-400

Je, soussigné, Alex Antonioli, en qualité de Président Directeur Général, déclare sous mon entière responsabilité que le produit indiqué ci-dessus est conforme aux dispositions prescrites par les directives suivantes :

•Directive 2004/108/CE DU PARLEMENT EUROPÉEN ET DU CONSEIL du 15 décembre 2004 relative au rapprochement des législations des États membres concernant la compatibilité électromagnétique et abrogeant la directive 89/336/CEE, selon les normes harmonisées suivantes : EN 61000-6-2:2005, EN 61000-6-3:2007

Par ailleurs, le produit est conforme à la directive suivante, conformément aux normes prévues pour les « quasi-machines » :

•Directive 2006/42/CE du PARLEMENT EUROPÉEN ET DU CONSEIL du 17 mai 2006 relative aux machines et modifiant la Directive 95/16/CE (refonte)

- Les documents techniques ont été rédigés conformément à l'annexe VII B de la directive 2006/42/CE. Les exigences suivantes ont été respectées :

1.1- 1.1.2- 1.1.3- 1.2.1-1.2.6- 1.5.1-1.5.2- 1.5.5- 1.5.6- 1.5.7- 1.5.8- 1.5.10- 1.5.11

- Le producteur s'engage à transmettre aux autorités nationales, en

réponse à une demande motivée, les données relatives à la « quasi-machine », dans le respect des droits de propriété intellectuelle.

- Si la « quasi-machine » a été mise en service dans un pays d'Europe dont la langue officielle diffère de celle utilisée dans la présente déclaration, l'importateur a l'obligation de joindre en annexe la traduction de la déclaration.

- La « quasi-machine » ne pourra pas être mise en service tant que la machine finale à laquelle elle sera incorporée n'aura pas été déclarée conforme à son tour, le cas échéant, à la directive 2006/42/CE.

En outre, le produit s'avère conforme aux normes suivantes :

EN 60335-1:2002 + A1:2004 + A11:2004 + A12:2006 + A2:2006 + A13:2008+ A14:2010 + A15:2011; EN 60335-2-103:2003+A1:2009

Le produit s'avère conforme, dans les limites applicables, aux normes suivantes :

EN 13241-1:2003, EN 12445:2002, EN 12453:2002, EN 12978:2003

Sacile, 19 06 2012

Alex Antonioli (Président Directeur Général)



ES - Declaración de conformidad CE

Declaración según las Directivas:2004/108/CE (EMC); 2006/42/CE (MD) anexo II, parte B

Número de declaración: K108/INTRO **Rev.:** 0 **Idioma:** ES
Nombre del fabricante: KING GATES S.R.L. • **Dirección:** Via Malignani, 42 - 33077 - Sacile (PN) Italy • **Tipo:** Motorreductor electromecánico Intro • **Modelo:** INTRO230-400, INTRO24-400

El que suscribe, Alex Antonioli, en su carácter de Administrador Delegado, declara bajo su responsabilidad que el producto antedicho es conforme a las disposiciones de las siguientes directivas:

•DIRECTIVA 2004/108/CE DEL PARLAMENTO EUROPEO Y DEL CONSEJO del 15 diciembre de 2004 relativa a la asimilación de las leyes de los Estados miembros sobre la compatibilidad electromagnética y que revoca la directiva 89/336/CEE, según las siguientes normas armonizadas: EN 61000-6-2:2005, EN 61000-6-3:2007

Asimismo, el producto resulta conforme con la siguiente directiva por lo que respecta los requisitos previstos para las "cuasi máquinas":

Directiva 2006/42/CE DEL PARLAMENTO EUROPEO Y DEL CONSEJO, de 17 de mayo de 2006, relativa a las máquinas y por la que se modifica la Directiva 95/16/CE (refundición)

- Se declara que la documentación técnica pertinente ha sido redactada de conformidad con el anexo VII B de la directiva 2006/42/CE y que se han respetado los siguientes requisitos esenciales:

1.1- 1.1.2- 1.1.3- 1.2.1-1.2.6- 1.5.1-1.5.2- 1.5.5- 1.5.6- 1.5.7- 1.5.8- 1.5.10- 1.5.11

- El fabricante se compromete a enviar a las autoridades nacionales que así lo soliciten la información pertinente sobre la "cuasi máquina", sin perjuicio de sus propios derechos de propiedad intelectual.

- Si la "cuasi máquina" se pone en servicio en un país europeo cuyo idioma oficial no sea el adoptado en esta declaración, el importador tendrá la obligación de adjuntar la traducción correspondiente.

- Se advierte que la "cuasi máquina" no deberá ponerse en servicio hasta que la máquina que la contenga no sea declarada conforme en virtud de la directiva 2006/42/CE, si procede.

El producto también cumple con las siguientes normas:

EN 60335-1:2002 + A1:2004 + A11:2004 + A12:2006 + A2:2006 + A13:2008+ A14:2010 + A15:2011; EN 60335-2-103:2003 +A1:2009
 El producto resulta conforme, por lo que respecta exclusivamente a las partes pertinentes, a las siguientes normas:

EN 13241-1:2003, EN 12445:2002, EN 12453:2002, EN 12978:2003

Sacile, 19 06 2012

Alex Antonioli (Administrador Delegado)



DE - CE-Konformitätserklärung

Erklärung in Übereinstimmung mit den Richtlinien: 2004/108/EG (EMV); 2006/42/EG (MR) Anhang II, Teil B

Erklärungsnummer: K108/INTRO **Überarb.:** 0 **Sprache:** DE
Herstellername: KING GATES S.R.L. • **Adresse:** Via Malignani, 42 - 33077 - Sacile (PN) Italy • **Typ:** Elektromechanischer Getriebemotor Intro • **Modell:** INTRO230-400, INTRO24-400

Der Unterzeichner Alex Antonioli erklärt in seiner Eigenschaft als Geschäftsführer auf eigene Verantwortung, dass das oben genannte Produkt mit den Bestimmungen der folgenden Richtlinien übereinstimmt:

•RICHTLINIE 2004/108/EG DES EUROPÄISCHEN PARLAMENTS UND DES RATES vom 15. Dezember 2004 zur Angleichung der Rechtsvorschriften der Mitgliedstaaten über die elektromagnetische Verträglichkeit und zur Aufhebung der Richtlinie 89/336/EWG, gemäß den harmonisierten Normen EN 61000-6-2:2005, EN 61000-6-3:2007. Darüber hinaus ist das Produkt entsprechend den Anforderungen für „unvollständige Maschinen“ kompatibel mit der folgenden Richtlinie:

•RICHTLINIE 2006/42/EG DES EUROPÄISCHEN PARLAMENTS UND DES RATES vom 17. Mai 2006 über Maschinen und zur Änderung der Richtlinie 95/16/EG (Neufassung)

- Wir erklären, dass die relevante technische Dokumentation in Übereinstimmung mit Anhang VII B der Richtlinie 2006/42/EG erstellt wurde und dass die folgenden wesentlichen Anforderungen erfüllt werden:

1.1- 1.1.2- 1.1.3- 1.2.1-1.2.6- 1.5.1-1.5.2- 1.5.5- 1.5.6- 1.5.7- 1.5.8- 1.5.10- 1.5.11

- Der Hersteller verpflichtet sich, den nationalen Behörden auf eine begründete Anfrage hin die relevanten Informationen über die „unvollständige Maschine“ zu übermitteln, wobei seine Rechte am geistigen Eigentum unberührt bleiben.

- Falls die „unvollständige Maschine“ in einem europäischen Land in Betrieb genommen werden, in dem eine andere Amtssprache als die der vorliegenden Erklärung gilt, ist der Importeur verpflichtet, dieser Erklärung die entsprechende Übersetzung anzufügen.

- Es wird darauf hingewiesen, dass die „unvollständige Maschine“ nicht in Betrieb genommen werden darf, bevor für die fertige Maschine, in die sie eingesetzt wird, ebenfalls eine Konformitätserklärung mit den Bestimmungen der Richtlinie 2006/42/EG (falls vorgeschrieben) ausgestellt wurde.

Darüber hinaus stimmt das Produkt mit den folgenden Normen überein: EN 60335-1:2002 + A1:2004 + A11:2004 + A12:2006 + A2:2006 + A13:2008+ A14:2010 + A15:2011; EN 60335-2-103:2003 +A1:2009

Das Produkt stimmt, mit Beschränkung auf die anwendbaren Teile, mit den folgenden Normen überein:

EN 13241-1:2003, EN 12445:2002, EN 12453:2002, EN 12978:2003

Sacile, 19.06.2012

Alex Antonioli (Geschäftsführer)



Dati dell'installatore / *Installer details*

Azienda / *Company* _____

Timbro / *Stamp*

Località / *Address* _____

Provincia / *Province* _____

Recapito telefonico / *Tel.* _____

Referente / *Contact person* _____

Dati del costruttore / *Manufacturer's details*

KINGGates

King Gates S.r.l.

Phone +39.0434.737082
info@king-gates.com

Fax +39.0434.786031
www.king-gates.com