

# Open

## Road barrier system



# Open

## Road barrier system

### COMPLETE RANGE

Available in 2 versions with bars from 4 up to 6 m, Open barriers are the ideal solution for control access of private roads, industrial complex and public transit areas.

The 24V direct current operator and the easy speed regulation allow a fast and intensive use, with opening time of just 3.5 seconds.

The installation is easy thanks to the possibility to assemble the bar on either the right or left hand side indifferently, and to the easy balance through a linear adjustment of the spring.

### OVERALL SAFETY

The anti-crush safety feature is guaranteed on opening and closing.

The control unit is protected by a metal frame and accessible just by a customised lock.

The manual opening is simple thanks to the protected release system, while the battery kit, purchasable as additional accessory, guarantees operations also in case of black-out.

### ACCESSORIES

Open barriers are completed by a wide and innovative range of accessories. The painted aluminium bars are extensible through strong joints that facilitate their transport and installation. The joint for bars allows installations also in underground garages or where the height of the ceiling doesn't allow the installation of standard bars. The led lights efficaciously signal the opening and closing of the bar.



1.



2.



3.

#### 1. RELEASE SYSTEM

*strong and reliable key Release System*

#### 2. BAR

*Elliptic profile in painted aluminium*

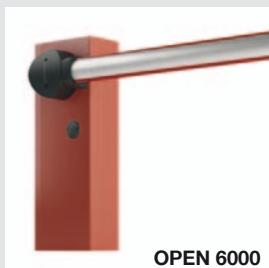
#### 3. CONTROL UNIT

*Wide lodging for control unit and electric wirings*

### AVAILABLE VERSIONS



OPEN 4000



OPEN 6000

#### Open 4000:

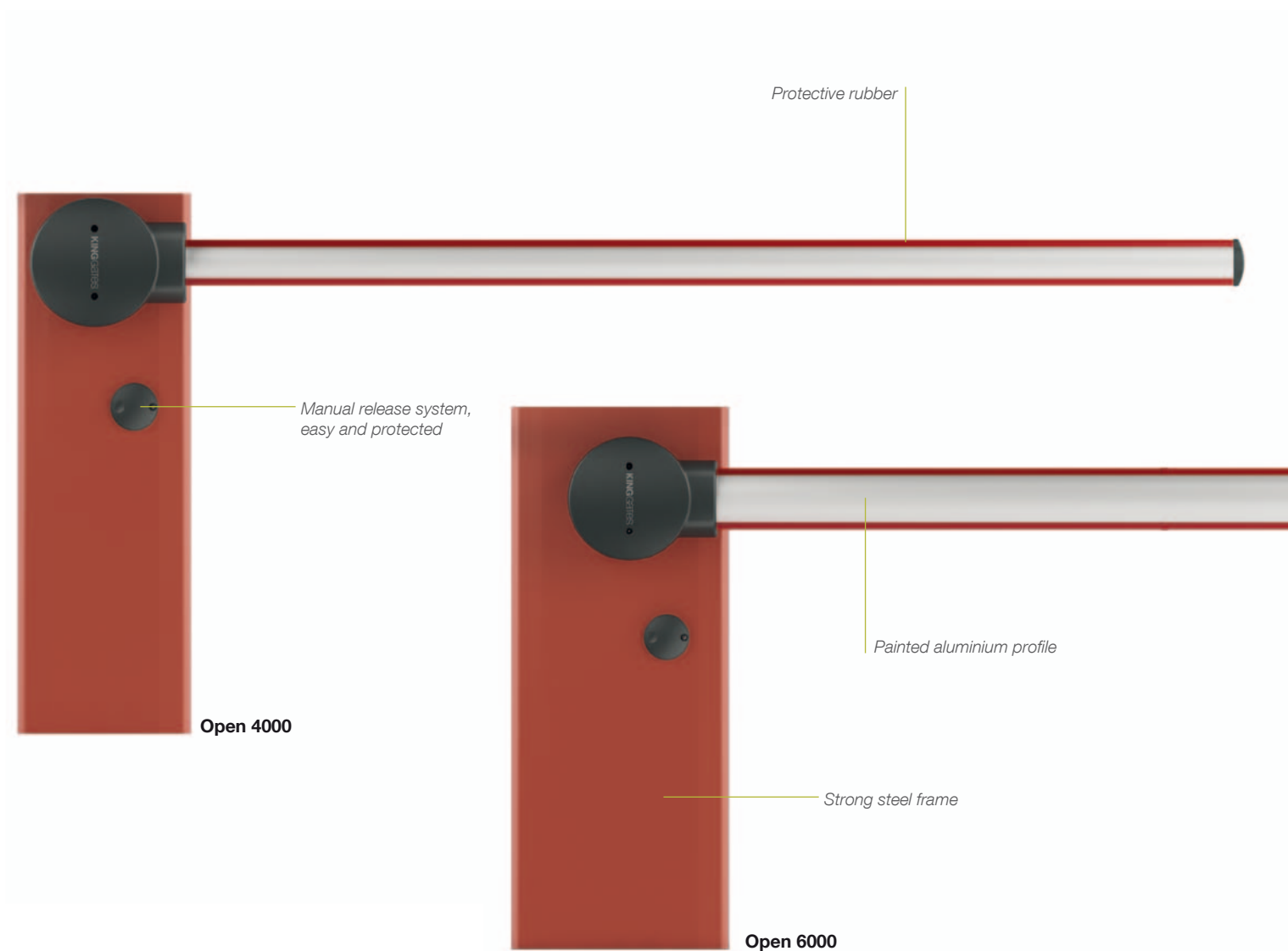
Operator for bars up to 4 m, with galvanised steel painted case

#### Open 6000:

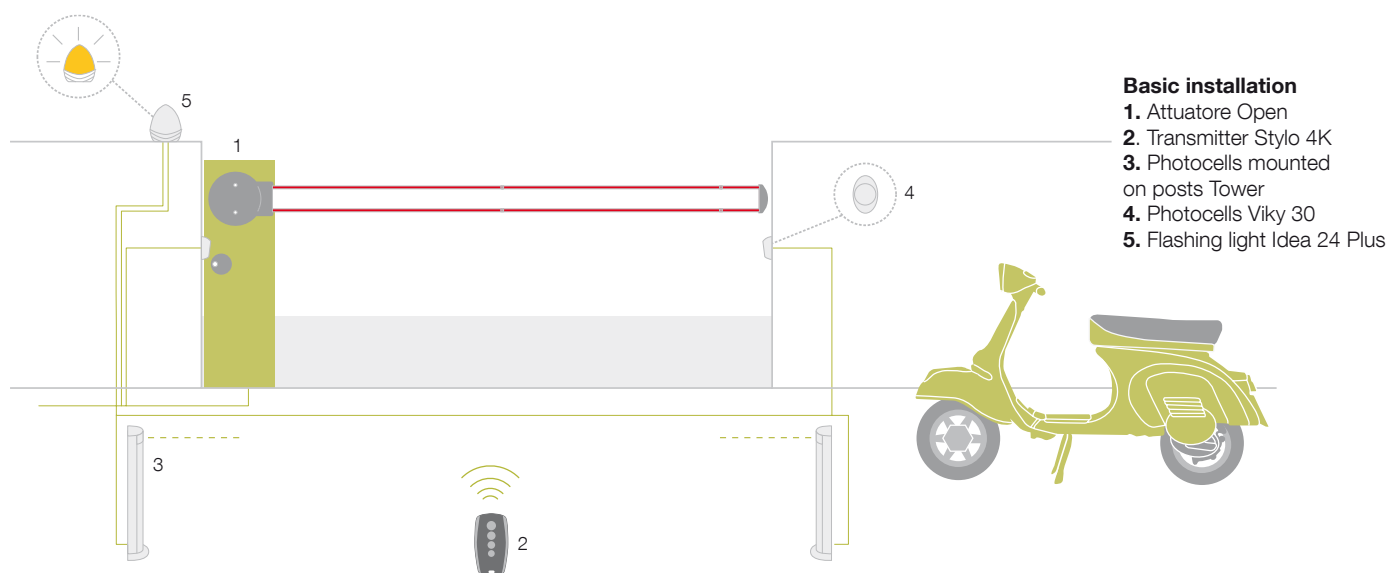
Operator for bars up to 6 m, with galvanised steel painted case

### TECHNICAL DATA

Code		OPEN 4000	OPEN 6000
Electrical data	(Vac)	230	
Power supply	(A)	1,1	0,6
Absorption	(W)	300	360
Power	(sec)	3,5	5
Minimum opening time	(Nm)	140	200
Torque	(%)	80	
Protection level	(IP)	54	
Working temp.	(°C)	-20 ÷ +50	
Dimensions	(mm)	320x220x1000 h	420x220x1050 h
Weight	(kg)	46	54



## SCHEME OF INSTALLATION



## ACCESSORIES

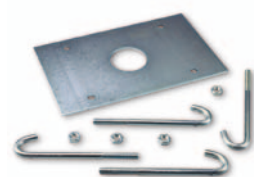
### FOR OPEN 4000



**ASO 4000**  
Bar 4m



**ASOLED4000**  
Indicator lights for click fixture on upper or lower side of bar. Length 4 m



**ASOB4000**  
Anchorage base

### FOR OPEN 6000



**ASO 3000**  
Bar 3m



**ASOLINK**  
Expansion joint



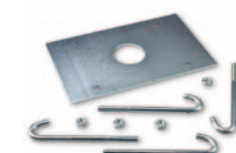
**ASOLED6000**  
Indicator lights for click fixture on upper or lower side of bar. Length 6 m



**ASOJOINT**  
Joint for bars ASO3000 (from 1950 mm to 2400 mm)



**ASO 5000**  
Bar 5m



**ASOB6000**  
Anchorage base

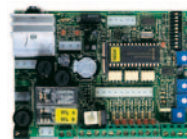


**ASOGRID**  
Aluminium rack

### COMMON ACCESSORIES



**ASORUB**  
Rubber impact protection strip



**STAR Open**  
Spare control unit



**RX K1**  
Plug-in receiver

**ASOSTICK**  
Red adhesive reflector strips.



**Bat K30**  
Plug-in card for battery charger

**ASOPA**  
Mobile stand for bars



**ASOPF**  
Adjustable stand for bars.



**BAT60**  
12 V, 6 Ah batteries