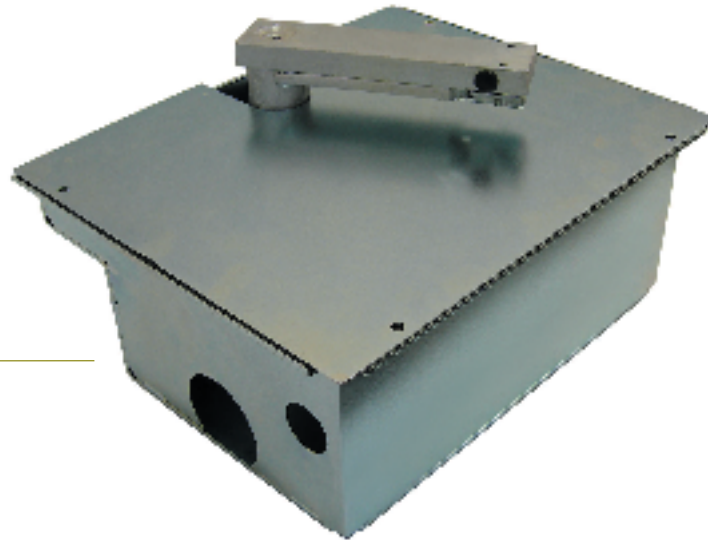


Automation for swing gates

Intro

Made in Italy
CE



Underground installation



Easy and robust release

INVISIBLE COMFORT

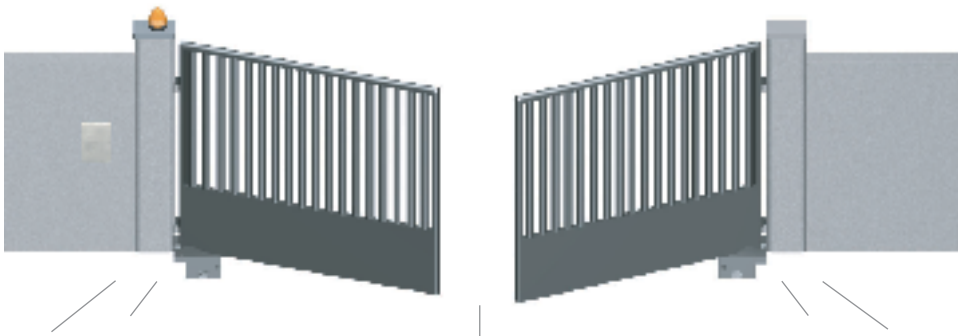
The recessed installation makes automation completely invisible so that the appearance of the gate is not modified. The solid die cast aluminium, the use of bronze and fine metals, and the IP67 degree of watertight seal ensure reliable operation and very little maintenance. The Star control units make Intro a safe, precise automation. Prevention against crushing is ensured by the "easy-control" function. Also, you can set motor torque and the point of end of travel deceleration so that the gate moves fluidly and constantly. If there is no electricity, the gate can be opened immediately thanks to the provided release lever, which can be easily inserted and turned with the slightest effort even if there is ice.

AVAILABLE VERSIONS

Code	Motor	Motor with a cable 2,5 m long	Motor with a cable 9 m long	Max dimension
Intro 230	230 Vac	●		2,5m - 400 Kg
SuperIntro 230	230 Vac	●	●	2,5m - 400 Kg
Intro 24	24 Vdc	●		2,5m - 400 Kg

UNDERGROUND BOX

Code	Zinc coated steel frame	Stainless steel frame
Introbox	●	
Introbox S		●



Basic installation:

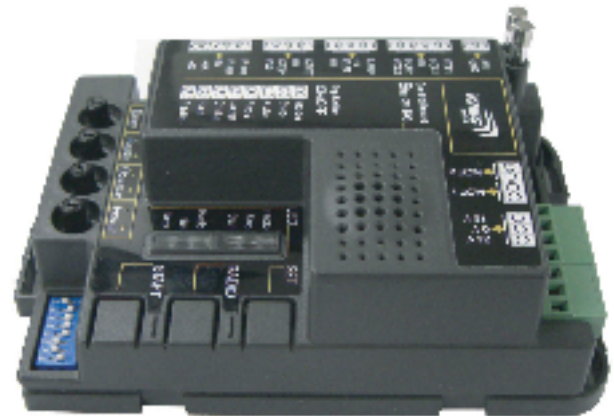
- 2 Operators Intro
- 1 Control unit Star Box
- 1 Photocell Viky 11
- 1 Flashing light with antenna Idea Plus
- Radiotransmitters Stylo

Accessories:

- Accessories Novo
- Safety edges

ELECTRONIC TECHNOLOGY

Star 2230 and Star 224 are the control units for Jet. They simplify the life of the installer, guaranteeing extremely high performances in terms of safety, durability, and speed. The same hardware with 2 different software speeds up the installation of the automation and the maintenance becomes simple and practical. The plastic box, the spare fuses and the removable memory card are some examples of the functionality and design of a reliable and innovative product. The software technology PWM (Pulse width modulation) ensure the safety in case of obstacle, and allow the adjustment of the opening and closing speed of the gate. The 24V version previews the optional battery back-up for the functioning in case of black-out.



TECHNICAL DATA		230	24
Power supply	(Vac 50Hz)	230	230
Motor power supply	(Vac/Vdc)	230	24
Motor power	(W)	200	50
Operating temperature	(°C)	-20 ÷ +55	-20 ÷ +55
Level of protection	(IP)	IP67	IP67
Absorption	(A)	1,3	2,5
Cycle of work	(%)	40	60
Dimensions	(mm)	340x170x410	340x170x410
Automation weight	(Kg)	10	10
Gate max weight	(m/Kg)	2,5m / 400Kg	2,5m / 400Kg

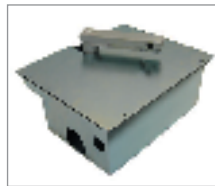
Kit solutions

Kit solution

Vast flexibility for all types of installation thanks to the multiple choice of kits with different range of accessories. See general catalogue for the composition of kits.



Gear motor
Intro



Underground box
Introbox



Control unit **Star**
with radio receiver



Radio transmitter
Rolling code - 4 channels
Stylo 4



Flashing light
with built-in antenna
Idea 24 Plus



Pair of
photocells
Viky 11



Sign
board
Tab

ACCESSORIES:

BK 10	BK 20	In 180	Lock HO	Lock VE
-------	-------	--------	---------	---------



Mechanical limit switches for
opening (2 pieces)



Mechanical limit switches for
closing (2 pieces)



Kit for leaf opening at 180°
for Intro 230



Horizontal
electro lock 12V



Vertical
electro lock 12V