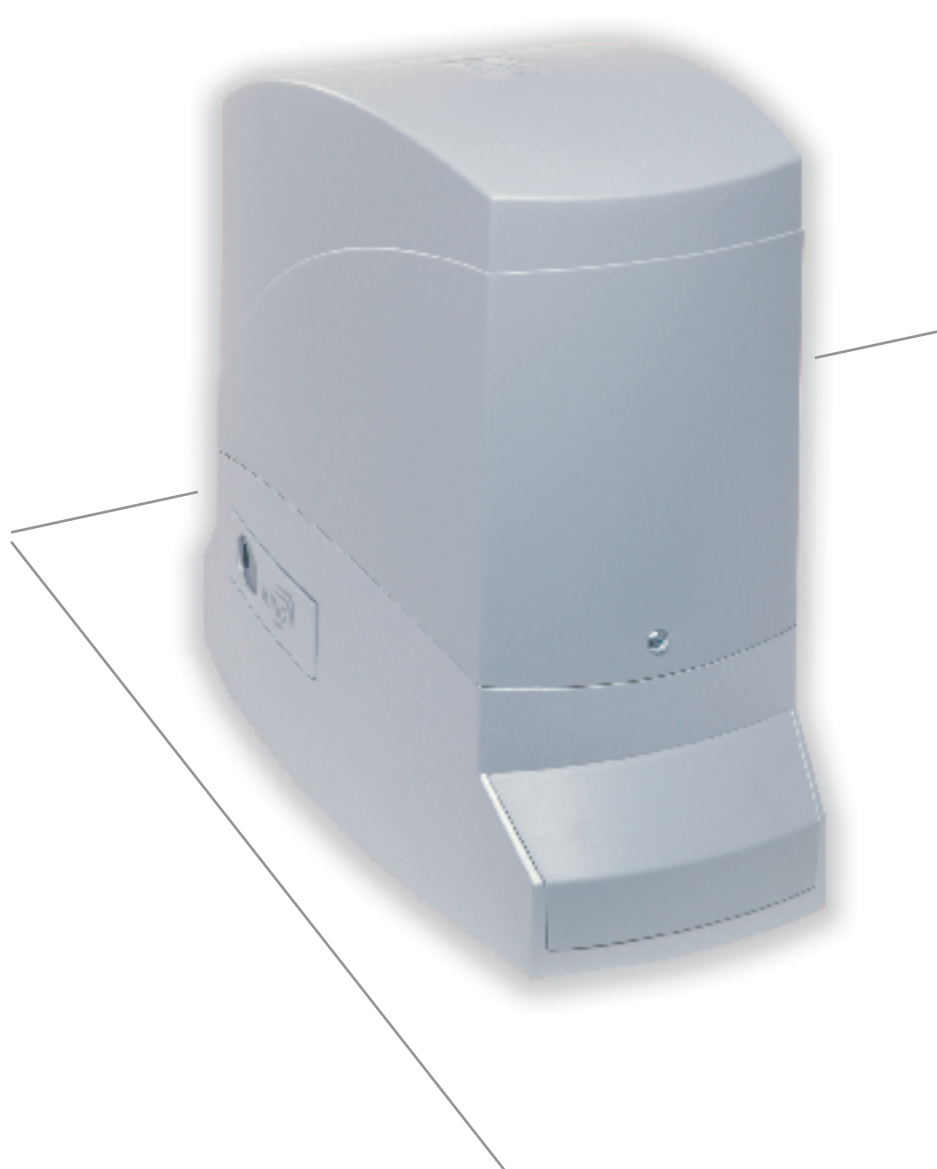




Automation for sliding gates

# Dynamos



Made in Italy  
CE

# Dynamos

Automation for sliding gates up to 1200Kg



## SILENT AND PRECISE MECHANICS

Reliability and safety are at the base of the mechanical components: produced with sturdy materials, they turn on large ball bearings that are attached to die-cast aluminium roller housings. The internal gear has involute teeth. This special construction allows maximum contact between the worm screw and the gear. The tooth wraps around the screw whereas in traditional construction the parts in contact add up to just a few millimetres.

The result? Quiet movement, high performance, no wear. 4 Kg of die cast aluminium, ABS plastic parts with anti-UVA ray treatment and pure polyester painting make Dynamos a solid automation that can stand up to any sort of weather.

The sturdy handle in die cast aluminium with personalized key allows manual opening of the gate and disables the electronic apparatus, preventing undesired movement.



Silent mechanics

Manual key release

4,5 Kg of aluminium

Protected electronics

Simple set-up

Battery back-up

## AVAILABLE VERSIONS

Code	Motor	Electronic unit	Radio receiver	Fixing Kit	Gate max weight
Dynamos 500	230 Vac	Star D 1230	●	●	500 Kg
Dynamos 1000	230 Vac	Star D 1230	●	●	1000 Kg
Dynamos 24/350 EV	24 Vdc	Star D 124	●	●	350 Kg
Dynamos 24/600	24 Vdc	Star D 124	●	●	600 Kg
Dynamos 24/1200	24 Vdc	Star D 124	●	●	1200 Kg



**Basic installation:**

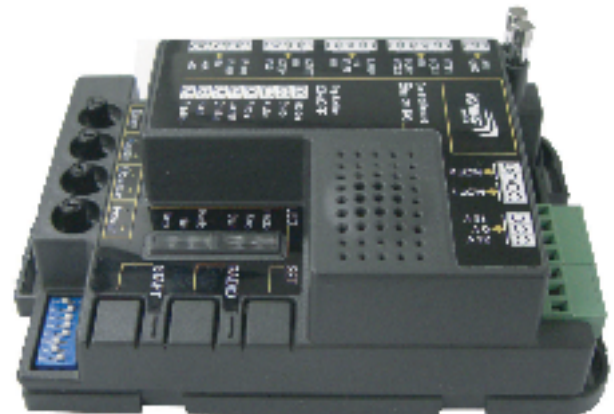
- 1 Operator **Dynamos**
- 1 Photocell **Viky 11**
- 1 Flashing light with antenna **Idea Plus**
- Radiotransmitters **Stylo**

**Accessories:**

- Accessories **Novo**
- Safety edges

**SILENT AND PRECISE MECHANICS**

Star D1230 and Star D 124 are the control units of Dynamos. They simplify the life of the installer, guaranteeing extremely high performances in terms of safety, durability, and speed. The same hardware with 2 different software speeds up the installation of the automation and the maintenance becomes simple and practical. The plastic box, the spare fuses and the removable memory card are some examples of the functionality and design of a reliable and innovative product. The software technology PWM (Pulse width modulation) ensure the safety in case of obstacle, and allow the adjustment of the opening and closing speed of the gate. The 24V version previews the optional battery back-up for the functioning in case of black-out.



TECHNICAL DATA		D 500	D 1000	D 24/350	D 24/600	D 24/1200
Power supply	(Vac 50Hz)	230	230	230	230	230
Motor power supply	(Vac/Vdc)	230	230	24	24	24
Motor power	(W)	200	400	40	70	80
Temp. di esercizio	(°C)	-20 ÷ +55	-20 ÷ +55	-20 ÷ +55	-20 ÷ +55	-20 ÷ +55
Operating temperature	(°C)	140	140	-	-	-
Speed	(m/min)	10	10	9 ÷ 15	9 ÷ 15	9 ÷ 15
Cycle of work	(%)	30	30	50	80	80
Dimensions	(mm)	325x185x274	325x185x274	325x185x274	325x185x274	325x185x274
Automation weight	(Kg)	10	12	9	11	11
Gate max weight	(Kg)	500	1000	350	600	1200

# Kit solutions



### Kit solution

Vast flexibility for all types of installation thanks to the multiple choice of kits with different range of accessories. See general catalogue for the composition of kits.



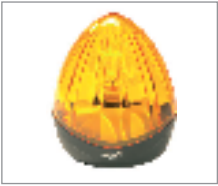
Gear motor  
**Dynamos**



Control unit **Star**  
with radio receiver



Radio transmitter  
Rolling code - 4 channels  
**Stylo 4**



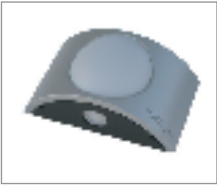
Flashing light  
with built-in antenna  
**Idea 24 Plus**



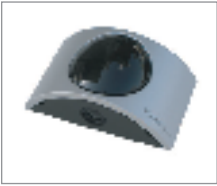
Pair of  
photocells  
**Viky 11**



Sign  
board  
**Tab**



Wall mounted flashing  
light with built-in antenna  
**Novo LT 24 Plus**



Adjustable  
photocell  
**NOVO Ph 180**

### ACCESSORIES:

CRIS 100	CRIS 200	CRIS 400	PDY 100	Bat M 016
				
Nylon rack with metal inserts. 28x20x1000	Rack in galvanized steel with screws and spacers. 30x12x1000	Rack in galvanized steel. 22x22x1000	Foundation plate for ground level mounting	Batteries 24V 1,6 Ah for Star D 124

### Bat K2



Battery charge card  
for Bat M016